

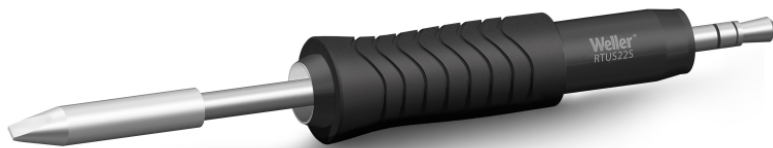
# RTUS 022 S MS

Product no.: T0050113199



## Benefits

- > For all heavy duty application with larger component sizes: Smart high performance active tips for heavy duty and largest components: from 1612 (Component Size XL to XXL)
- > Extremely Fast 7-Second Heat-Up Time for Heavy-Duty Applications
- > Thermal Core Technology Provides High Power at the Tip Point
- > Maximum Precision: Short tip-to-grip distance and optimized shape provides maximum precision during the soldering process.
- > Clear Identification Smart Tips
- > Full Process Control with Tip Lock Function
- > Full Traceability with Tip ID Number and Integrated Data Storage
- > Accurate Data Results with Tip-Offset Function
- > Fast, Safe and Easy Tip Exchange
- > Maximum Protection: (IPC industry standards - TM-650 2.5.33)



**Technical Data**

Tip shape	Chisel shape
Tip type	MS
Width in mm	2.2
Width in inches	0.087
Thickness in mm	0.6
Thickness in inches	0.024
Length mm	28.0
Length inches	1.102
Power	---
Packaging unit	1